

**AGREEMENT
FOR THE CONSERVATION AND RECOVERY OF THE
WOODLAND CARIBOU IN ALBERTA**

This Agreement for the conservation and recovery of the southern mountain and boreal caribou (“Agreement”) is made in duplicate as of October 19, 2020, pursuant to Section 11 of the SPECIES AT RISK ACT (CANADA) and Sections 10 and 11 of the GOVERNMENT ORGANIZATION ACT (ALBERTA).

BETWEEN

HER MAJESTY THE QUEEN IN RIGHT OF CANADA,
as represented by the Minister of the Environment
who is responsible for the Department of the Environment
(“Canada” or “Environment and Climate Change Canada” or “ECCC”)

And

**HER MAJESTY THE QUEEN IN RIGHT OF THE PROVINCE OF
ALBERTA,**
as represented by the Minister of Environment and Parks (“Alberta” or
“AB”)

(hereinafter the “Parties”)

PREAMBLE

WHEREAS the woodland caribou (*Rangifer tarandus caribou*) have been listed as threatened under the *Species at Risk Act* (Canada) and as threatened under the *Wildlife Act* (Alberta) RSA 2000, c W-10;

AND WHEREAS Alberta and Canada recognize their respective and shared accountability to conserve and recover all woodland caribou populations in Alberta;

AND WHEREAS Alberta and Canada wish to cooperate in the identification of conservation and recovery measures and recognize their shared responsibility of delivering conservation, management, and recovery measures to support protection and recovery of woodland caribou;

AND WHEREAS Alberta has legislative responsibility for, among other things, wildlife management, including species at risk, and decisions respecting natural resources and provincial Crown and private lands, in the province of Alberta, and has the responsibility to lead on conservation, management, and recovery measures for woodland caribou in the province;

AND WHEREAS Canada has legislative responsibility for wildlife species located on federal lands, and wildlife species listed on Schedule 1 of the *Species at Risk Act*, which includes provisions to address recovery, as well as the protection of listed wildlife species including the individuals, their residences, and critical habitat on non-federal land in certain circumstances;

AND WHEREAS conservation measures for the portions of the Jasper/Banff and A La Peche local populations that occur within national parks are described in the multi-species action plans for Banff and Jasper national parks, and critical habitat located within Banff, Jasper, and Wood Buffalo national parks is protected under subsection 58(1) of the *Species at Risk Act*;

AND WHEREAS this Agreement does not pertain to federal lands;

AND WHEREAS the Parties recognize the interest of Indigenous Peoples to be involved in the recovery of woodland caribou, and that Indigenous Peoples' perspectives will be relevant to inform implementation of this Agreement including with respect to their constitutionally protected Aboriginal and treaty rights;

AND WHEREAS the Parties recognize that achieving woodland caribou conservation and recovery will consider biological, social and economic factors;

AND WHEREAS the Parties recognize that the protection of the habitat of species at risk is key to their conservation and recovery;

AND WHEREAS the Parties recognize that this Agreement may not constitute protection within the meaning of Section 61 of the *Species at Risk Act* but plays an important role in describing measures that support woodland caribou recovery;

AND WHEREAS the Parties recognize the value of species conservation and recovery;

AND WHEREAS the Parties recognize that woodland caribou conservation and recovery will require long-term resourcing and commitment on behalf of both Parties to be successful;

AND WHEREAS Section 11 of the *Species at Risk Act* provides the competent ministers with the authority to enter into conservation agreements with any other government in Canada, organization or person to benefit a species at risk or enhance its survival in the wild, such agreements must provide for the taking of conservation measures and any other measures consistent with the purposes of the *Species at Risk Act*;

AND WHEREAS Sections 10 and 11 of the *Government Organization Act*, RSA 2000, chapter G-10 provides that Alberta may enter into an intergovernmental agreement;

AND WHEREAS the Parties are both signatories to the *Accord for the Protection of Species at Risk* (1996);

NOW THEREFORE, the Parties commit to the following:

1 DEFINITIONS

The following definitions are used for the purpose of this Agreement:

“Access management plan” means a plan describing a coordinated network of access routes that enable sustainable resource development, and supports achievement of woodland caribou objectives, while encouraging cost efficiencies, expedited approvals, and minimization of footprint. Planning parameters include access route location, use, timing, grade of access, and reclamation requirements.

“Best available information” means data or information that are appropriate to inform decisions and is accessible by the Parties.

“Biophysical habitat attributes” are the habitat characteristics required by woodland caribou to carry out life processes necessary for the survival and productivity of individual animals, and maintenance of local populations. Biophysical habitat attributes

are a component of critical habitat. Identification of biophysical habitat attributes for Alberta's woodland caribou local populations was informed by identifying the Alberta Vegetation Inventory (or in some cases other forest mapping) forest types that provide biophysical habitat attributes, dependent on forest age.

"Critical habitat" refers to the habitat that is necessary for the survival or recovery of woodland caribou, as identified in the federal *Recovery Strategy for the Woodland Caribou (Rangifer tarandus caribou), Boreal Population, in Canada* (2012), the federal *Recovery Strategy for the Woodland Caribou (Rangifer tarandus caribou) Southern Mountain Population in Canada* (2014), or any amendments and revisions to these documents by Canada.

"Footprint" means areas of habitat change and loss resulting from human activities in woodland caribou local population ranges.

"Important areas for woodland caribou" means, as described in ECCC's *Range Plan Guidance For Woodland Caribou, Boreal Population* (2016), continuous tracts of undisturbed habitat of suitable quality (i.e., with the required biophysical attributes) to ensure naturally self-sustaining local populations. In accordance with seasonal and life-stage activities, important areas may include habitat with characteristics for broad scale, calving, post-calving, rutting, wintering, and travel activity types. Alberta's identification of important areas for Alberta's woodland caribou local populations was additionally informed by the distribution of biophysical habitat, caribou occurrence, home ranges and movements, and connectivity within and among caribou ranges.

"Indigenous Peoples" includes "Aboriginal Peoples of Canada" within the meaning of Section 35 of the *Constitution Act, 1982*.

"Naturally self-sustaining woodland caribou populations" means a local population of woodland caribou that on average demonstrates stable or positive population growth over 20 years, and is large enough to withstand stochastic events and persist for ≥50 years, without the need for ongoing active management intervention (e.g., predator management or transplants from other populations).

"Range plans" means plans, consistent with ECCC's *Range Plan Guidance for Woodland Caribou, Boreal Population* (2016), that provide monitoring and science information on a woodland caribou local population or group of local populations, as well as actions required to conserve and recover that woodland caribou local population or populations. A range plan must include how woodland caribou local population range-specific land and resource management activities will occur over space and time to protect and recover woodland caribou critical habitat. This includes managing for important areas for woodland caribou, biophysical habitat, and establishing an ongoing

minimum of 65% of the range as undisturbed habitat. Range plans may be stand-alone documents, or part of other planning documents. Range plans could inform and be informed by broader land-use planning decision making, such as subregional planning.

“Recovery Strategies” means the *Recovery Strategy for the Woodland Caribou (Rangifer tarandus caribou), Boreal Population, in Canada* (2012) and the *Recovery Strategy for the Woodland Caribou (Rangifer tarandus caribou) Southern Mountain Population in Canada* (2014).

“Stakeholders” means representatives of local governments, non-governmental organizations, private landowners, tenure holders, businesses, industry associations, other key partners, and members of the public.

“Subregional plan” means an outcomes-based plan that is enabled through the *Alberta Land Stewardship Act* to address location, issue-specific challenges, and cumulative effects by providing clear operational direction, and must be considered when making decisions within the defined subregion. A subregional plan may include regulations, conditions, directives, zones, targets, and thresholds to achieve desired woodland caribou recovery outcomes. In areas of the province where woodland caribou occur, a subregional plan will incorporate key components identified in ECCC’s *Range Plan Guidance for Woodland Caribou, Boreal Population* (2016).

“Woodland caribou” means the southern mountain (central group) and boreal populations of woodland caribou (*Rangifer tarandus caribou*) in Alberta.

2 GOAL AND PURPOSE

The overarching goal of this Agreement is to support the conservation and recovery of woodland caribou local populations to naturally self-sustaining status, consistent with the population and distribution objectives and critical habitat outcomes outlined in the Recovery Strategies and aligned with *A Woodland Caribou Policy for Alberta* (2011).

The purpose of this Agreement is to set out measures that will be taken by the Parties to support conservation and recovery of woodland caribou local populations in Alberta. Conservation, management, and recovery measures will include management and monitoring of important areas for woodland caribou, biophysical habitat attributes, and achievement and maintenance of a minimum 65% undisturbed habitat. These measures will align with ECCC’s *Range Plan Guidance for Woodland Caribou, Boreal Population* (2016) and include: landscape planning; habitat conservation, management, and recovery; mortality and population management; and population and habitat monitoring.

3 PRINCIPLES

Recognizing their respective jurisdictions, the following principles will guide interpretation and implementation of this Agreement.

3.1 Collaboration and engagement

- 3.1.1 The Parties will work together to develop a common understanding of measures needed to achieve woodland caribou conservation and recovery, and will cooperate in the delivery of these conservation, management, and recovery measures in a manner that minimizes duplication, is efficient, respects jurisdictional roles and responsibilities, and considers socio-economic implications;
- 3.1.2 The Parties will continue to engage and collaborate with Indigenous Peoples on woodland caribou conservation and recovery, including in the development and implementation of conservation measures and subregional plans;
- 3.1.3 The Parties will continue to engage and collaborate with stakeholders on woodland caribou conservation and recovery, including in the development and implementation of conservation measures and subregional plans; and
- 3.1.4 The Parties will continue to engage and collaborate with the Parks Canada Agency, the Department of National Defence, and other federal land managers as required, on planning and implementation of conservation and recovery measures for woodland caribou local populations that occur wholly or in part on federal lands in Alberta. This could include the development of additional agreements under Section 11 of the *Species at Risk Act*, for woodland caribou conservation, management, and recovery.

3.2 Results focus

- 3.2.1 During the 5-year term of this Agreement, the Parties will continue to implement, or initiate conservation, management, and recovery measures towards achieving positive trends and contributing to caribou population outcomes outlined in the Recovery Strategies in all woodland caribou local populations. In addition, the Parties will maintain naturally self-sustaining local populations where they exist. Both habitat and non-habitat measures will be required to achieve these results;
- 3.2.2 The Parties will implement conservation, management and recovery measures to achieve critical habitat outcomes outlined in the Recovery Strategies; and

3.2.3 In the longer term, the Parties will continue to implement conservation and recovery measures to achieve and maintain naturally self-sustaining local populations consistent with the population and distribution objectives in the Recovery Strategies.

3.3 Use of best available information

3.3.1 The Parties will make use of the best available information, which may include traditional, local, and scientific information, to support woodland caribou conservation and recovery.

3.4 Adaptive management

3.4.1 The Parties recognize that monitoring the effects of actions and adjusting approaches as necessary will be critical to success. Adaptive management will use the best available information and take into consideration changing ecological conditions, such as climate change, and stochastic events.

3.5 Transparency

3.5.1 The Parties will publicly report on the implementation of conservation, management, and recovery measures covered by this Agreement, on an annual basis.

4 INTERPRETATION

4.1 The preamble hereof and any Appendices hereto form an integral part of this Agreement.

4.2 This Agreement does not create any new legal powers or duties on the part of the Parties nor does it alter the powers and duties established by the *Species at Risk Act*, or any other federal legislation, or the *Wildlife Act* or any other provincial legislation in Alberta.

4.3 Neither Party relinquishes or acquires any jurisdiction, right, power, privilege, prerogative or immunity by virtue of this Agreement.

4.4 Where access to land under the administration and control of other parties is necessary to carry out conservation measures, the Parties recognize the need for access to be obtained through agreements with, or approvals from, the owners, occupiers or custodians of those lands. However, the Parties acknowledge that despite their efforts to obtain access from other parties for the purposes of carrying out conservation, management, and recovery measures, obtaining access from other parties may not be possible, and

delivery of conservation, management, and recovery measures may be delayed or prevented.

- 4.5 For greater certainty, nothing in this Agreement should be interpreted as limiting the right of any person to engage in activities referred to in Section 83 of the *Species at Risk Act*, subject to any applicable conditions prescribed in that section.

5 COLLABORATE AND COOPERATE ON RECOVERY STRATEGIES, ACTION PLANS, RANGE PLANS, AND SUBREGIONAL PLANS

- 5.1 The Parties will cooperate in the development, amendment, and implementation of recovery strategies, action plans, management plans, range plans, subregional plans, and similar documents related to the conservation, management, and recovery of woodland caribou. This cooperation will include:
 - 5.1.1 Keeping the other Party informed of the timing of the preparation of recovery strategies, action plans, range plans, subregional plans, and other recovery, planning, and implementation documents related to the conservation, management, and recovery of woodland caribou;
 - 5.1.2 Seeking to cooperate on timing of document preparation to coordinate processes and seek efficiencies;
 - 5.1.3 Sharing information for the preparation of plans; and
 - 5.1.4 When planning and implementing conservation, management, and recovery measures for woodland caribou, continue to look for benefits, and consider effects, to other species.

6 INDIGENOUS PEOPLES ENGAGEMENT

- 6.1 The Parties commit to engage with Indigenous Peoples for the conservation, management, and recovery of woodland caribou; each Party in accordance with its established policies and practices.
- 6.2 With respect to this Agreement, the Parties will:
 - 6.2.1 Engage Indigenous Peoples to share information on progress and future measures related to implementation of conservation, management, and recovery measures; and
 - 6.2.2 Consider opportunities for collaboration with Indigenous Peoples on implementation of conservation, management, and recovery measures.

- 6.3 The Parties will consider information that Indigenous Peoples share with the Parties in woodland caribou assessment, protection, conservation, management, and recovery efforts.

7 STAKEHOLDER ENGAGEMENT

- 7.1 The Parties commit to engaging with stakeholders for the conservation and recovery of woodland caribou.
- 7.2 With respect to this Agreement, the Parties will:
- 7.2.1 Engage stakeholders to share information on progress and future measures related to implementation of conservation, management, and recovery measures; and
 - 7.2.2 Consider opportunities for collaboration with stakeholders on implementation of conservation, management, and recovery measures.
- 7.3 The Parties will consider information that stakeholders share with the Parties in woodland caribou assessment, protection, conservation, management, and recovery efforts.

8 CONSERVATION, MANAGEMENT, AND RECOVERY MEASURES FOR WOODLAND CARIBOU

- 8.1 The Parties acknowledge that:
- 8.1.1 Achieving the goal and purpose of this Agreement will require integration of woodland caribou conservation, management, and recovery requirements into land and resource management plans, decisions, and actions;
 - 8.1.2 As provided in *A Woodland Caribou Policy for Alberta* (2011), woodland caribou conservation and recovery will require both immediate and long-term measures to protect, restore, and manage habitat, and increase woodland caribou recruitment and survival;
 - 8.1.3 Conserving, recovering, and maintaining critical habitat, as identified in the Recovery Strategies, in all of Alberta's woodland caribou local population ranges, is the immediate priority;
 - 8.1.4 Critical habitat recovery will require a landscape-level approach, delivered over a period of years;
 - 8.1.5 Population management actions are interim measures, to reduce woodland caribou mortality, avoid woodland caribou local population declines, and avoid reduced range occupancy by caribou populations,

until local populations become naturally self-sustaining through concurrent critical habitat protection and restoration;

- 8.1.6 Some improvements in protection of woodland caribou and their critical habitat can be addressed within current decision-making processes, while others may require legislative, regulatory, or policy change;
 - 8.1.7 Determining the mix of conservation, management, and recovery measures will consider factors including biological, social, economic, natural resource tenures, and the rights and interests of Indigenous Peoples;
 - 8.1.8 Stochastic events, such as wildfires, and changing ecological conditions potentially arising from climate change may occur during delivery of woodland caribou conservation, management, and recovery actions. As indicated in *A Woodland Caribou Policy for Alberta (2011)*, adaptive management will ensure that conservation, management, and recovery actions undertaken through this agreement are monitored and, as necessary, adjusted to incorporate new information or changing circumstances;
 - 8.1.9 While this Agreement is specific to woodland caribou, a broad range of species native to the boreal forest may be affected by conservation, management, and recovery measures implemented for woodland caribou. Multi-species management will be considered in developing subregional plans; and
 - 8.1.10 The prioritization of woodland caribou conservation, management, and recovery actions, including subregional planning, considers conservation urgency and opportunities for achievement of woodland caribou population and distribution objectives and critical habitat outcomes.
- 8.2 The Parties are committed to achieving naturally self-sustaining local woodland caribou populations in Alberta, consistent with *A Woodland Caribou Policy for Alberta (2011)*, and the population and distribution objectives set out in the Recovery Strategies. The Parties have identified the following targets to guide the application and evaluation of conservation, management, and recovery measures over the short, medium, and long term:
- 8.2.1 Short term (5 years or sooner): deliver management actions to maintain or achieve stable or positive growth for woodland caribou local populations including Little Smoky, A La Peche, Redrock/Prairie Creek, Narraway, Chinchaga, Cold Lake, and East Side of the Athabasca River;

- 8.2.2 Medium term (10 years or sooner): deliver management actions towards maintaining or achieving stable or positive population growth for all woodland caribou local populations; and
 - 8.2.3 Long term (50 to 100 years or sooner): the target is to achieve naturally self-sustaining status for all woodland caribou local populations in Alberta.
- 8.3 The Parties will develop and implement conservation, management, and recovery measures that contribute to achievement, over time, of the woodland caribou critical habitat outcomes set out in the Recovery Strategies. The Parties have identified the following targets to guide delivery and evaluation of conservation, management, and recovery measures over the short, medium and long term:
- 8.3.1 Short term (5 years or sooner) the target is to:
 - 8.3.1.1 Finalize and implement subregional plans that support achievement of woodland caribou critical habitat outcomes for all woodland caribou local population ranges;
 - 8.3.1.2 Initiate or continue woodland caribou critical habitat restoration in local population ranges and avoid disturbance of areas treated to initiate habitat restoration; and
 - 8.3.1.3 Enable resumption of subsurface mineral sales in woodland caribou local population ranges, that is in alignment with woodland caribou conservation and recovery objectives, including the need to increase woodland caribou critical habitat.
 - 8.3.2 Medium term (10 years or sooner) the target is to:
 - 8.3.2.1 Annually deliver management actions that will contribute to achieving critical habitat outcomes in all of Alberta's woodland caribou local population ranges;
 - 8.3.2.2 Conserve and manage undisturbed habitat and biophysical habitat to enable all woodland caribou local populations in Alberta to be naturally self-sustaining in the long term; and
 - 8.3.2.3 Evaluate the potential to protect woodland caribou habitat through Alberta's existing legislative or regulatory tools.
 - 8.3.3 Long term (50 to 100 years or sooner) the target is to:

8.3.3.1 Demonstrate an increasing amount of critical habitat through time, to achieve the critical habitat outcomes outlined in the Recovery Strategies and to enable all woodland caribou local populations in Alberta to be naturally self-sustaining.

8.4 To achieve the above, the Parties will implement the conservation, management, and recovery measures described in the Tables listed below (see Appendix B):

8.4.1 Table A – Landscape planning;

8.4.2 Table B – Habitat conservation, management, and recovery;

8.4.3 Table C – Mortality and population management; and

8.4.4 Table D – Population and habitat monitoring.

9 GOVERNANCE

9.1 The Representatives of the Parties (as referred to in Section 16.1 of this Agreement) will establish a committee composed of delegates referred to in Sections 16.2 and 16.3. This committee will:

9.1.1 Provide overall direction with respect to the implementation of this Agreement;

9.1.2 Ensure strategic alignment between delivery of provisions outlined in this Agreement and the Recovery Strategies; and

9.1.3 Ensure that communication, cooperation and collaboration between the Parties is clear, timely, and effective.

10 INFORMATION SHARING AND RESEARCH

10.1 The Parties agree, subject to applicable data sharing agreements or legislative provisions that would prevent them from doing so, to provide the other Party access, at no charge, to available data and information relevant to the implementation of this Agreement. This may include:

10.1.1 Information on the status, conservation, management, and recovery of woodland caribou local populations and their habitats;

10.1.2 Annual communication of local population size and growth, and the amount, condition, and location of critical habitat; and

10.1.3 Immediate communication on the implications of stochastic events as they occur.

- 10.2 Some data and information may require confidentiality, or may have been obtained with an understanding of confidentiality, for reasons including but not limited to ensuring safe and effective implementation of conservation, management, and recovery measures. Data and information so identified by a Party will be held confidential by the Parties to the extent permitted by their respective legislation and related policies, procedures, and agreements, including those with other parties.
- 10.3 Each Party may identify research or monitoring needs to increase knowledge that will enhance woodland caribou conservation, management, or recovery in Alberta.
- 10.4 The Parties will collaborate to evaluate how the findings of research or monitoring could contribute to woodland caribou conservation, management, and recovery.

11 FINANCIAL ARRANGEMENTS AND SUPPORT

- 11.1 Recognizing the significant financial investments required to support woodland caribou conservation, management, and recovery, the Parties commit to providing funding to support woodland caribou conservation, management, and recovery.
- 11.2 The Parties will work together on an annual basis to identify needs, priorities, and additional funding opportunities, including non-government partners, to implement conservation and recovery measures to achieve the recovery outcomes identified in this Agreement.
- 11.3 The Parties recognize that implementation of this Agreement is subject to their respective appropriations, priorities, and budgetary constraints.
- 11.4 Canada agrees to provide Alberta with financial support for the implementation of this Agreement, the details of which will be set out in separate contribution agreements.

12 PLANNING, MONITORING, AND REPORTING

- 12.1 Representatives of the Parties or their delegates (identified in Section 16) agree to convene, at least annually, to develop and/or review work plans and financial investments for the coming year:
 - 12.1.1 Woodland caribou recovery measures identified in Appendix B will be included in development of annual work plans; and

- 12.1.2 The Representatives will evaluate progress on implementation of this Agreement, discuss activities planned for the next year, and identify additional commitments that may be required to increase the likelihood of achieving the conservation and recovery of woodland caribou in Alberta.
- 12.2 An annual progress report on the implementation of this Agreement will be prepared by the committee referred to in Section 9.1 and presented to the Representatives referred to in Section 16.1.
- 12.3 A comprehensive report, summarizing the status of conservation and recovery measures over multiple years, will be prepared by the committee and made publically available in those years when Canada is preparing the report referred to in Section 46 of the *Species at Risk Act*.
- 12.4 The aforementioned reports will be used to inform reporting requirements under Sections 46 and 63 and paragraph 126(c) of the *Species at Risk Act*, these may include:
- 12.4.1 Progress towards achieving commitments identified by the Parties in this Agreement;
 - 12.4.2 Steps taken to protect and recover critical habitat of woodland caribou that is not yet protected;
 - 12.4.3 Progress towards achieving agreed upon annual actions;
 - 12.4.4 Population and habitat monitoring results;
 - 12.4.5 The effectiveness of conservation and recovery measures outlined in Appendix B of this Agreement in relation to provisions listed in the Recovery Strategies; and
 - 12.4.6 Unforeseen circumstances or stochastic events that might impact conservation and recovery measures.
- 12.5 Annual reporting will be made publicly available, including woodland caribou local population and range habitat metrics (i.e., population size and growth; biophysical habitat attributes by type, area, and location; percent and location of range that is undisturbed or on a trajectory to undisturbed status).

13 AGREEMENT DURATION, TERMINATION AND RENEWAL

- 13.1 This Agreement takes effect on the date of the last signature affixed to this Agreement (“Effective Date”). It will remain in force for a term of five years, unless terminated earlier by one of the Parties or the Parties mutually agree to terminate it.

- 13.2 Either Party may terminate this Agreement for any reason, 90 days after consulting with and providing written notice to the other Party. Each Party acknowledges that failure to implement commitments it has made in this Agreement may be grounds for the other Party to invoke this section.
- 13.3 The Parties may renew this Agreement, or any part of it, and its term may be extended with the mutual written consent of the Parties prior to the expiration of this Agreement.
- 13.4 The Parties may enter into other agreements, under Section 11 of the *Species at Risk Act*, relating to this Agreement, including with Indigenous Peoples or stakeholders. The Parties agree to discuss the content, potential implications, and alignment of: a) proposed Section 11 agreements prior to their development and finalization; and b) other existing Section 11 agreements.

14 AMENDMENT

- 14.1 This Agreement may be amended from time to time with the written consent of both Parties.
- 14.2 In particular, Appendix B to this Agreement may be amended in writing from time to time, as required, and automatically incorporated to this Agreement, as amended, by the written consent of the Accountable Agency whose action that portion of Appendix B describes.
- 14.3 In case of amendments to either or both of the Recovery Strategies, the Parties will consider whether amendments to this Agreement are warranted.

15 DISPUTE RESOLUTION

- 15.1 In the event of a dispute between the Parties arising out of this Agreement, the Parties will use the following procedure to resolve the dispute:
- 15.1.1 The committee referred to in Section 9.1 will be the first point of resolution for disputes arising from woodland caribou activities and programming contemplated in this Agreement; and
- 15.1.2 Disputes which cannot be resolved by the committee referred to in Section 9.1 will be referred to the Representatives identified pursuant to Section 16.1 of this Agreement for final resolution.

16 DESIGNATION FOR IMPLEMENTATION OF THIS AGREEMENT

- 16.1 For the purposes of this Agreement, the Representatives of the Parties are:

- 16.1.1 Alberta – the Assistant Deputy Minister, Lands Division, Environment and Parks; and
- 16.1.2 Canada – the Assistant Deputy Minister of the Canadian Wildlife Service, Environment and Climate Change Canada.
- 16.2 The administration and day-to-day implementation of this Agreement will be carried out on behalf of Canada by delegates of the Assistant Deputy Minister of the Canadian Wildlife Service, Environment and Climate Change Canada.
- 16.3 The administration and day-to-day implementation of this Agreement will be carried out on behalf of Alberta by delegates of the Assistant Deputy Minister of Lands Division, Environment and Parks.
- 16.4 Where this Agreement requires notice be provided or received, or consent be given, the Representative of each Party identified in Section 16.1 may provide or receive notice or give the consent required.

17 COUNTERPARTS

- 17.1 This Agreement may be signed in several counterparts and each counterpart shall constitute an original document; these counterparts taken together shall constitute one and the same Agreement. The parties agree that executed counterparts may be transmitted electronically and that such counterparts will be treated as originally executed instruments. Each Party undertakes to provide the others with a copy of the original Agreement bearing actual original signatures within a reasonable period of time following execution of this Agreement.

18 SIGNATURES

IN WITNESS WHEREOF, the Parties have executed this Agreement.

On behalf of Her Majesty the Queen in Right of Canada, as represented by the Assistant Deputy Minister, Canadian Wildlife Service.

Niall O'Dea
Assistant Deputy Minister
Canadian Wildlife Service
Environment and Climate Change Canada

Signed this _____ day of _____, 2020.

On behalf of Her Majesty the Queen in right of the Province Alberta, as represented by the Assistant Deputy Minister of Lands Division, Alberta Environment and Parks.

Lisa Sadownik
Assistant Deputy Minister of Lands Division
Alberta Environment and Parks

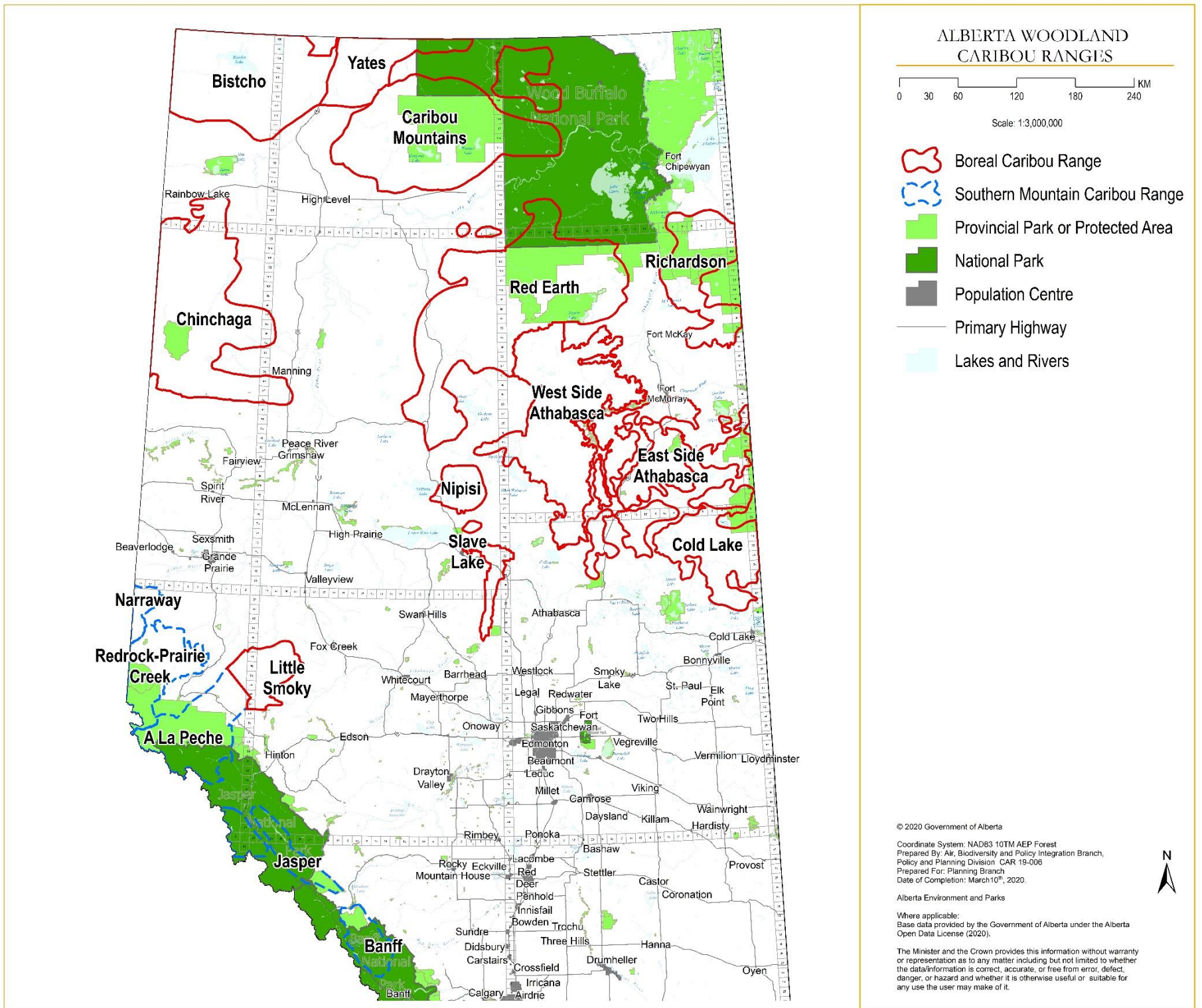
Signed this _____ day of _____, 2020.

Approved pursuant to the *Government Organization Act*

Intergovernmental Relations, Executive Council

Signed this _____ day of _____, 2020.

Appendix A – Map Identifying Location of Woodland Caribou Local Population Ranges in Alberta



Appendix B – Woodland Caribou Recovery Measures Tables

TABLE A – LANDSCAPE PLANNING

Management Tool	Contribution to Population and Distribution Objectives	Action Objective Over Term of Agreement	Accountable Agency	Ranges	Deliverables				
					2021	2022	2023	2024	2025
A.1 Subregional Planning (Range Planning)	Critical habitat and woodland caribou population conservation and recovery	A.1.1 Complete subregional plans that will achieve, at the caribou range level, woodland caribou critical habitat outcomes set out in the Recovery Strategies and consistent with ECCC's <i>Range Plan Guidance for Woodland Caribou, Boreal Population</i> (2016)	Alberta	Cold Lake (including Christina portion of East Side of the Athabasca River range), Bistcho	Continue to support subregional task forces to develop recommendations that inform subregional plans that achieve critical habitat outcomes set out in the Recovery Strategies. Multi-species and socio-economic considerations and analyses will be considered by the task forces. Finalize subregional plans that consider all land uses, including footprint, recreational and access management plans, for identified ranges.	Implement subregional plans for identified ranges.	Implement subregional plans for identified ranges.	Implement subregional plans for identified ranges.	Implement subregional plans for identified ranges.
		A.1.2 Complete subregional plans that will achieve, at the caribou range level, woodland caribou critical habitat outcomes set out in the Recovery Strategies and consistent with ECCC's <i>Range Plan Guidance</i>	Alberta	Redrock/Prairie Creek, Narraway	Continue to support subregional task forces to develop recommendations that inform subregional plans that achieve critical habitat outcomes set out in the	Finalize subregional plans that consider all land uses, including footprint, recreational and access management plans, for identified ranges.	Implement subregional plans for identified ranges.	Implement subregional plans for identified ranges.	Implement subregional plans for identified ranges.

Management Tool	Contribution to Population and Distribution Objectives	Action Objective Over Term of Agreement	Accountable Agency	Ranges	Deliverables				
					2021	2022	2023	2024	2025
		<i>for Woodland Caribou, Boreal Population (2016)</i>			Recovery Strategies. Multi-species and socio-economic considerations and analyses will be considered by the task forces.				
		A.1.3 Complete subregional plans that will achieve, at the caribou range level, woodland caribou critical habitat outcomes set out in the Recovery Strategies and consistent with ECCC's <i>Range Plan Guidance for Woodland Caribou, Boreal Population (2016)</i>	Alberta	East Side of the Athabasca River	Subregional task forces will be established to develop recommendations that inform subregional plans that achieve critical habitat outcomes set out in the Recovery Strategies. Multi-species and socio-economic considerations and analyses will be considered by the task forces.	Finalize subregional plans that consider all land uses, including footprint, recreational and access management plans, for identified ranges.	Implement subregional plans for identified ranges.	Implement subregional plans for identified ranges.	Implement subregional plans for identified ranges.
		A.1.4 Complete subregional plans that will achieve, at the caribou range level, woodland caribou critical habitat outcomes set out in the Recovery Strategies and consistent with ECCC's <i>Range Plan Guidance for Woodland Caribou, Boreal Population (2016)</i>	Alberta	Chinchaga, Little Smoky, A La Peche	Subregional task forces will be established to develop recommendations that inform subregional plans that achieve critical habitat outcomes set out in the Recovery Strategies. Multi-species and socio-economic considerations and analyses will be	Continue to support subregional task forces to develop recommendations that inform subregional plans that achieve critical habitat outcomes set out in the Recovery Strategies. Multi-species and socio-economic considerations and analyses will be	Finalize subregional plans that consider all land uses, including footprint, recreational and access management plans, for identified ranges.	Implement subregional plans for identified ranges.	Implement subregional plans for identified ranges.

Management Tool	Contribution to Population and Distribution Objectives	Action Objective Over Term of Agreement	Accountable Agency	Ranges	Deliverables				
					2021	2022	2023	2024	2025
					considered by the task forces.	considered by the task forces.			
		A.1.5 Complete subregional plans that will achieve, at the caribou range level, woodland caribou critical habitat outcomes set out in the Recovery Strategies and consistent with ECCC's <i>Range Plan Guidance for Woodland Caribou, Boreal Population</i> (2016)		Nipisi, Slave Lake		Subregional task forces will be established to develop recommendations that inform subregional plans that achieve critical habitat outcomes set out in the Recovery Strategies. Multi-species and socio-economic considerations and analyses will be considered by the task forces.	Finalize subregional plans that consider all land uses, including footprint, recreational and access management plans, for identified ranges.	Implement subregional plans for identified ranges.	Implement subregional plans for identified ranges.
		A.1.6 Complete subregional plans that will achieve, at the caribou range level, woodland caribou critical habitat outcomes set out in the Recovery Strategies and consistent with ECCC's <i>Range Plan Guidance for Woodland Caribou, Boreal Population</i> (2016)	Alberta	Richardson, West Side of the Athabasca River		Subregional task forces will be established to develop recommendations that inform subregional plans that achieve critical habitat outcomes set out in the Recovery Strategies. Multi-species and socio-economic considerations and analyses will be considered by the task forces.	Continue to support subregional task forces to develop recommendations that inform subregional plans that achieve critical habitat outcomes set out in the Recovery Strategies. Multi-species and socio-economic considerations and analyses will be considered by the task forces.	Finalize subregional plans that consider all land uses, including footprint, recreational and access management plans, for identified ranges.	Implement subregional plans for identified ranges.
		A.1.7 Complete subregional plans that will achieve, at the	Alberta	Yates, Caribou Mountains, Red Earth			Subregional task forces will be established to	Continue to support subregional task forces to develop	Finalize subregional plans that consider all land uses, including

Management Tool	Contribution to Population and Distribution Objectives	Action Objective Over Term of Agreement	Accountable Agency	Ranges	Deliverables				
					2021	2022	2023	2024	2025
		caribou range level, woodland caribou critical habitat outcomes set out in the Recovery Strategies and consistent with ECCCC's <i>Range Plan Guidance for Woodland Caribou, Boreal Population</i> (2016)					develop recommendations that inform subregional plans that achieve critical habitat outcomes set out in the Recovery Strategies. Multi-species and socio-economic considerations and analyses will be considered by the task forces.	recommendations that inform subregional plans that achieve critical habitat outcomes set out in the Recovery Strategies. Multi-species and socio-economic considerations and analyses will be considered by the task forces.	footprint, recreational and access management plans, for identified ranges.
A.2 Legal Authority for Subregional Plans	Critical habitat and woodland caribou population conservation and recovery	A.2.1 Establish subregional plans, that support woodland caribou conservation and recovery, under provincial legislation	Alberta		Enable subregional plans under provincial legislation. Subregional plans are published in the Alberta Gazette.	Enable subregional plans under provincial legislation. Subregional plans are published in the Alberta Gazette.	Enable subregional plans under provincial legislation. Subregional plans are published in the Alberta Gazette.	Enable subregional plans under provincial legislation. Subregional plans are published in the Alberta Gazette.	Enable subregional plans under provincial legislation. Subregional plans are published in the Alberta Gazette.
A.3 Cross-Jurisdictional Coordination	Critical habitat and woodland caribou population conservation and recovery	A.3.1 Develop and implement complementary conservation and management measures with neighbouring federal, territorial, and provincial jurisdictions for shared woodland caribou populations	Environment and Climate Change Canada and Alberta	Transboundary ranges, including Bistcho, Yates, Caribou Mountains, Red Earth, Chinchaga, A La Peche, Redrock-Prairie Creek Narraway, Jasper, Cold Lake, East Side of the Athabasca River, Richardson	Initiate or build on current communication, collaboration, and formalize engagement with neighbouring jurisdictions.	Maintain engagement with neighbouring jurisdictions. Develop and implement plans for shared woodland caribou populations.	Maintain engagement with neighbouring jurisdictions. Develop and implement plans for shared woodland caribou populations.	Maintain engagement with neighbouring jurisdictions. Develop and implement plans for shared woodland caribou populations.	Maintain engagement with neighbouring jurisdictions. Develop and implement plans for shared woodland caribou populations.
A.4 Range Boundary Updates	Critical habitat and woodland caribou	A.4.1 Adjust identified woodland caribou local	Alberta (lead)	Caribou Mountains, Yates, and Red	Finalize adjusted range boundaries and incorporate in				

Management Tool	Contribution to Population and Distribution Objectives	Action Objective Over Term of Agreement	Accountable Agency	Ranges	Deliverables					
					2021	2022	2023	2024	2025	
	population conservation and recovery Enable subregional plans	population range boundaries	Environment and Climate Change Canada	Earth, relative to range delineations within Wood Buffalo National Park, and an overall evaluation of Richardson	provincial land use planning and approval processes. Updated range boundaries are available for incorporation into future Recovery Strategy amendments.					

TABLE B – HABITAT CONSERVATION, MANAGEMENT, AND RECOVERY

Management Tool	Contribution to Population and Distribution Objectives	Action Objective over Term of Agreement	Accountable Agency	Ranges	Deliverables					
					2021	2022	2023	2024	2025	
B.1 Restoration	Critical habitat and woodland caribou population conservation and recovery Increase critical habitat	B.1.1 Restore footprint to contribute to achievement of woodland caribou critical habitat outcomes set out in the Recovery Strategies	Alberta	All ranges in whole or in part on provincial land with an emphasis on southern mountain caribou	Establish funding mechanisms to enable partnership among industry, federal and provincial governments, and other partners. Complete analyses for and publish map of priority restoration areas on a provincial scale. Develop 5 year program plan and annual workplan that includes identification of engagement activities with	Set up Indigenous and multi-stakeholder Restoration Steering Committee to support habitat restoration program implementation. Continue implementing provincial restoration program.	Continue implementing provincial restoration program.	Continue implementing provincial restoration program.	Continue implementing provincial restoration program.	Continue implementing provincial restoration program.

Management Tool	Contribution to Population and Distribution Objectives	Action Objective over Term of Agreement	Accountable Agency	Ranges	Deliverables					
					2021	2022	2023	2024	2025	
					<p>Indigenous Peoples and stakeholders.</p> <p>Continue implementing and scaling up provincial restoration program.</p> <p>Publish Alberta's <i>Provincial Restoration and Establishment Framework for Legacy Seismic Lines in Alberta.</i></p> <p>Establish a process to track sites where restoration has been initiated, and monitor restoration progress.</p>					
		B.1.2 Involve Indigenous Peoples in identification of desired access routes prior to restoration implementation	Alberta	All ranges in whole or in part on provincial land	Work with interested Indigenous peoples to identify desired access routes.	Ongoing	Ongoing	Ongoing	Ongoing	Ongoing
B.2 Forest Harvest Management	<p>Critical habitat and woodland caribou population conservation and recovery</p> <p>Reduce impacts to critical habitat (i.e., disturbance and biophysical habitat attributes) and to woodland caribou</p>	B.2.1 Complete range-specific planning to inform forest management that will achieve woodland caribou critical habitat outcomes set out in the Recovery Strategies	Alberta	All ranges in whole or in part on provincial land	<p>Complete forest harvest planning for areas with completed sub-regional plans, that is consistent with woodland caribou conservation and recovery.</p> <p>Planning will consider the implications of</p>	<p>Complete forest harvest planning for areas with completed sub-regional plans, that is consistent with woodland caribou conservation and recovery.</p> <p>Planning will consider the implications of</p>	<p>Complete forest harvest planning for areas with completed sub-regional plans, that is consistent with woodland caribou conservation and recovery.</p> <p>Planning will consider the implications of</p>	<p>Complete forest harvest planning for areas with completed sub-regional plans, that is consistent with woodland caribou conservation and recovery.</p> <p>Planning will consider the implications of alternative forest</p>	<p>Complete forest harvest planning for areas with completed sub-regional plans, that is consistent with woodland caribou conservation and recovery.</p> <p>Planning will consider the implications of alternative forest</p>	<p>Complete forest harvest planning for areas with completed sub-regional plans, that is consistent with woodland caribou conservation and recovery.</p> <p>Planning will consider the implications of alternative forest</p>

Management Tool	Contribution to Population and Distribution Objectives	Action Objective over Term of Agreement	Accountable Agency	Ranges	Deliverables				
					2021	2022	2023	2024	2025
	population trend and distribution				alternative forest management scenarios and enable an increase in the amount of critical habitat over time within all woodland caribou ranges.	alternative forest management scenarios and enable an increase in the amount of critical habitat over time within all woodland caribou ranges.	alternative forest management scenarios and enable an increase in the amount of critical habitat over time within all woodland caribou ranges.	management scenarios and enable an increase in the amount of critical habitat over time within all woodland caribou ranges.	management scenarios and enable an increase in the amount of critical habitat over time within all woodland caribou ranges.
		B.2.2 Ensure alignment of Forest Management Plans and harvesting operations with conservation and recovery of local woodland caribou populations and woodland caribou critical habitat outcomes set out in the Recovery Strategies	Alberta	All ranges in whole or in part on provincial land	Forest Management Plans and harvesting operations will be aligned with, and contribute to, conservation and recovery of local woodland caribou populations and critical habitat outcomes.	Forest Management Plans and harvesting operations will be aligned with, and contribute to, conservation and recovery of local woodland caribou populations and critical habitat outcomes.	Forest Management Plans and harvesting operations will be aligned with, and contribute to, conservation and recovery of local woodland caribou populations and critical habitat outcomes.	Forest Management Plans and harvesting operations will be aligned with, and contribute to, conservation and recovery of local woodland caribou populations and critical habitat outcomes.	Forest Management Plans and harvesting operations will be aligned with, and contribute to, conservation and recovery of local woodland caribou populations and critical habitat outcomes.
B.3 Wildfire Management Planning	Reduction of wildfire risk to woodland caribou values in accordance with Wildfire Management priorities	B.3.1 Incorporate woodland caribou range values (e.g., critical habitat, caribou population occurrence, rearing facilities) in wildfire management plans	Alberta	Little Smoky, A La Peche, RedRock/Prairie Creek, Narraway	Values are to be identified within each woodland caribou range and provided to Wildfire Management Branch for forest area wildfire management planning.	Strategies for addressing wildfire risk are identified in each woodland caribou range. Update wildfire management plans, if required, and progressively implement for existing plans and as plans are developed.	Strategies for addressing wildfire risk are identified in each woodland caribou range. Update wildfire management plans, if required, and progressively implement for existing plans and as plans are developed.	Progressive implementation.	Review strategies and implementation; develop and implement adjustments as needed.
		B.3.2 Incorporate woodland caribou range values (e.g., critical habitat, caribou population occurrence, rearing facilities)	Alberta	All remaining ranges in whole or in part on provincial land	Values are to be identified within each woodland caribou range and provided to Wildfire Management for	Values are to be identified within each woodland caribou range and provided to Wildfire Management for	Strategies for addressing wildfire risk are identified in each woodland caribou range. Update wildfire	Strategies for addressing wildfire risk are identified in each woodland caribou range. Update wildfire	Progressive implementation.

Management Tool	Contribution to Population and Distribution Objectives	Action Objective over Term of Agreement	Accountable Agency	Ranges	Deliverables				
					2021	2022	2023	2024	2025
		in wildfire management plans			forest area wildfire management planning.	forest area wildfire management planning.	management plans, if required, and progressively implement for existing plans and as plans are developed.	management plans, if required, and progressively implement for existing plans and as plans are developed.	
B.4 Management of Energy Sector Activities	<p>Critical habitat and woodland caribou population conservation and recovery</p> <p>Net reduction in disturbance to critical habitat from energy sector activities</p> <p>Reduce impacts to critical habitat (i.e., disturbance and biophysical habitat) and to woodland caribou population trend and distribution</p>	B.4.1 Pursue voluntary agreements with energy companies that support woodland caribou conservation and recovery objectives	Alberta	All ranges in whole or in part on provincial land	<p>Alberta will implement existing agreements and evaluate the impact of these agreements in contributing to woodland caribou conservation and recovery objectives.</p> <p>Alberta will consider and may pursue additional agreements with energy companies to reduce footprint of future developments.</p>	Alberta will consider and may pursue additional agreements with energy companies to reduce footprint of future developments.	Alberta will consider and may pursue additional agreements with energy companies to reduce footprint of future developments.	Alberta will consider and may pursue additional agreements with energy companies to reduce footprint of future developments.	Alberta will consider and may pursue additional agreements with energy companies to reduce footprint of future developments.
		B.4.2 Conduct access management planning that is consistent with woodland caribou conservation and recovery objectives	Alberta	Cold Lake, Bistcho	Initiate development of access management plans for identified ranges.	Finalize access management plans for identified ranges.	Implement access management plans for identified ranges.	Implement access management plans for identified ranges.	Implement access management plans for identified ranges.
		B.4.3 Conduct access management planning that is consistent with woodland caribou conservation and recovery objectives	Alberta	Redrock/Prairie Creek, Narraway		Initiate development of access management plans for identified ranges.	Finalize access management plans for identified ranges.	Implement access management plans for identified ranges.	Implement access management plans for identified ranges.

Management Tool	Contribution to Population and Distribution Objectives	Action Objective over Term of Agreement	Accountable Agency	Ranges	Deliverables				
					2021	2022	2023	2024	2025
		B.4.4 Conduct access management planning that is consistent with woodland caribou conservation and recovery objectives	Alberta	East Side of the Athabasca River		Initiate development of access management plans for identified ranges.	Finalize access management plans for identified ranges.	Implement access management plans for identified ranges.	Implement access management plans for identified ranges.
		B.4.5 Conduct access management planning that is consistent with woodland caribou conservation and recovery objectives	Alberta	Chinchaga, Little Smoky, A La Peche, Nipisi, and Slave Lake			Initiate development of access management plans for identified ranges.	Finalize access management plans for identified ranges.	Implement access management plans for identified ranges.
		B.4.6 Conduct access management planning that is consistent with woodland caribou conservation and recovery objectives	Alberta	Richardson, West Side of the Athabasca River				Initiate development of access management plans for identified ranges.	Finalize access management plans for identified ranges.
		B.4.7 Conduct access management planning that is consistent with woodland caribou conservation and recovery objectives	Alberta	Yates, Caribou Mountains, Red Earth,					Initiate development of access management plans for identified ranges.
B.5 Land Use Management	Critical habitat and woodland caribou population conservation and recovery Minimize destruction and disturbance of critical habitat	B.5.1 Ensure project approval conditions for existing and future energy, forestry and other land uses minimize impacts, including cumulative effects, to woodland caribou critical habitat, individual woodland caribou, and woodland caribou populations Develop new conditions to reduce impacts, including	Alberta	All ranges in whole or in part on provincial land	Make permanent the referral of all non-standard energy industry applications by the Alberta Energy Regulator to Alberta Environment and Parks – Fish & Wildlife Stewardship Branch personnel for review and comment.	Assess and implement use of reservations and notations to assist in achieving woodland caribou critical habitat outcomes as listed in the Recovery Strategies. Ensure that project approval conditions for energy, forestry, and other land uses reduce impacts to caribou critical habitat and	Continue ensuring that project approval conditions for energy, forestry, and other land uses reduce impacts to woodland caribou critical habitat and woodland caribou populations.	Continue ensuring that project approval conditions for energy, forestry, and other land uses reduce impacts to woodland caribou critical habitat and woodland caribou populations.	Continue ensuring that project approval conditions for energy, forestry, and other land uses reduce impacts to woodland caribou critical habitat and woodland caribou populations.

Management Tool	Contribution to Population and Distribution Objectives	Action Objective over Term of Agreement	Accountable Agency	Ranges	Deliverables				
					2021	2022	2023	2024	2025
		cumulative effects, to woodland caribou critical habitat, individual woodland caribou, and woodland caribou populations			Consider potential opportunities to adjust Master Schedule of Standards and Conditions if zonation or similar approaches are adopted for woodland caribou ranges. Review and update the Master Schedule of Standards and Conditions related to woodland caribou ranges.	caribou populations.			
	Maintain connectivity for caribou within and between local population ranges to support woodland caribou conservation and recovery	B.5.2 Consider potential management actions for identified important areas that occur outside range boundaries	Alberta	All ranges in whole or in part on provincial land	Assess important areas, biophysical habitat attributes, undisturbed caribou habitat, caribou occurrence, and caribou movements for opportunities and needs related to land use management actions.	Document and implement any management actions.	Document and implement any management actions.	Document and implement any management actions.	

TABLE C – MORTALITY AND POPULATION MANAGEMENT

Management Tool	Contribution to Population and Distribution Objectives	Action Objective over Term of Agreement	Accountable Agency	Ranges	Deliverables				
					2021	2022	2023	2024	2025
C.1 Predator Management	Reduce mortality of woodland caribou due to predation	C.1.1 Wolf population management	Alberta	All ranges in whole or in part on provincial land	Maintain current predator management programming in populations where currently underway. Assess need for predator management in additional woodland caribou ranges, consider discussions with relevant Indigenous Peoples, and identify the need to coordinate with neighbouring jurisdictions. Ongoing coordination of predator management program delivery with British Columbia (i.e., Red Rock/Prairie Creek, Narraway, and Chinchaga).	Ongoing predator management programming. Assess need for predator management in additional woodland caribou ranges, consider discussions with relevant Indigenous Peoples, and identify the need to coordinate with neighbouring jurisdictions. Implement predator management actions as agreed upon during cross-jurisdictional discussions (see next action objective).	Ongoing predator management programming. Assess need for predator management in additional woodland caribou ranges, consider discussions with relevant Indigenous Peoples, and identify the need to coordinate with neighbouring jurisdictions. Implement predator management actions as agreed upon during cross-jurisdictional discussions (see next action objective).	Ongoing predator management programming. Assess need for predator management in additional woodland caribou ranges, consider discussions with relevant Indigenous Peoples, and identify the need to coordinate with neighbouring jurisdictions. Implement predator management actions as agreed upon during cross-jurisdictional discussions (see next action objective).	Ongoing predator management programming. Discussions with Indigenous Peoples as required. Implement predator management actions as agreed upon during cross-jurisdictional discussions (see next action objective). Five year reporting on range-specific predator management activities.
		C.1.2 Convene neighbouring federal, provincial, and territorial jurisdictions on predator management	Environment and Climate Change Canada	Transboundary ranges	Convene relevant neighbouring federal, provincial, and territorial jurisdictions to identify the need for, and collaborate on, predator management actions for	Convene relevant neighbouring federal, provincial, and territorial jurisdictions to identify the need for, and collaborate on, predator management	Convene relevant neighbouring federal, provincial, and territorial jurisdictions to identify the need for, and collaborate on, predator management actions for additional	Convene relevant neighbouring federal, provincial, and territorial jurisdictions to identify the need for, and collaborate on, predator management actions for additional	Convene relevant neighbouring federal, provincial, and territorial jurisdictions to identify the need for, and collaborate on, predator management actions for additional local populations based on

Management Tool	Contribution to Population and Distribution Objectives	Action Objective over Term of Agreement	Accountable Agency	Ranges	Deliverables				
					2021	2022	2023	2024	2025
					Chinchaga, Jasper, A La Peche, Cold Lake, and East Side of the Athabasca River woodland caribou populations.	actions for additional local populations based on needs assessment (see previous row), as necessary.	local populations based on needs assessment (see previous row), as necessary.	local populations based on needs assessment (see previous row), as necessary.	needs assessment (see previous row), as necessary.
		C.1.3 Evaluate effectiveness of Alberta Trappers Association-led pilot program to increase wolf harvest activity by Registered Fur Management Area (RFMA) holders	Alberta	Little Smoky A La Peche, Redrock-Prairie Creek, Chinchaga, Cold Lake East Side of the Athabasca River	Continued delivery of pilot program related to incentivised wolf harvesting, and to training of RFMA holders and Indigenous trappers.	Implement program subject to availability of budget resources and success of pilot program	Implement program subject to availability of budget resources and success of pilot program	Implement program subject to availability of budget resources and success of pilot program.	Implement program subject to availability of budget resources and success of pilot program
C.2 Captive Rearing	Reduce mortality of woodland caribou due to predation	C.2.1 Consider establishing a rearing facility in the Little Smoky range and, if approved, commence 5-year pilot program	Alberta	Little Smoky	Finalize decisions regarding proceeding with the project.	Proceed with project, based on approvals.	Ongoing operations as needed.	Ongoing operations as needed.	Ongoing operations as needed.
		C.2.2 Explore opportunities for collaboration with Indigenous Peoples	Alberta	Little Smoky	Continue engagement.	Continue engagement.	Continue engagement.	Continue engagement.	Continue engagement.
C.3 Harvest Management	Reduce human-caused woodland caribou mortality	C.3.1 Assess the need for establishing a conservation closure to prohibit killing of woodland caribou	Alberta	All ranges in whole or in part on provincial land	Assess need for conservation closure. Identify communities that harvest woodland caribou.	Initiate consultation with identified communities and non-community based stakeholders, including current woodland caribou harvest and desired future woodland caribou harvest.	Establish conservation closure as required.		

Management Tool	Contribution to Population and Distribution Objectives	Action Objective over Term of Agreement	Accountable Agency	Ranges	Deliverables				
					2021	2022	2023	2024	2025
C.4 Alternative Prey Management	Reduce mortality of woodland caribou population due to predation	C.4.1 Manage vegetation to reduce alternative prey forage	Alberta	All ranges in whole or in part on provincial land	Complete and deliver range-specific plans that over time will achieve woodland caribou critical habitat outcomes set out in the Recovery Strategies.	Complete and deliver range-specific plans that over time will achieve woodland caribou critical habitat outcomes set out in the Recovery Strategies.	Complete and deliver range-specific plans that over time will achieve woodland caribou critical habitat outcomes set out in the Recovery Strategies.	Complete and deliver range-specific plans that over time will achieve woodland caribou critical habitat outcomes set out in the Recovery Strategies.	Complete and deliver range-specific plans that over time will achieve woodland caribou critical habitat outcomes set out in the Recovery Strategies.
		C.4.2 Increase harvest opportunities for alternative prey species	Alberta	Woodland caribou ranges receiving predator management actions	Assess alternative prey abundance and harvest levels by Indigenous Peoples with constitutionally recognized harvesting rights. Enhance licenced harvesting opportunities where needed to avoid alternative prey population increases.	Assess alternative prey abundance and harvest levels by Indigenous Peoples with constitutionally recognized harvesting rights. Enhance licenced harvesting opportunities where needed to avoid alternative prey population increases.	Assess alternative prey abundance and harvest levels by Indigenous Peoples with constitutionally recognized harvesting rights. Enhance licenced harvesting opportunities where needed to avoid alternative prey population increases.	Assess alternative prey abundance and harvest levels by Indigenous Peoples with constitutionally recognized harvesting rights. Enhance licenced harvesting opportunities where needed to avoid alternative prey population increases.	Assess alternative prey abundance and harvest levels by Indigenous Peoples with constitutionally recognized harvesting rights. Enhance licenced harvesting opportunities where needed to avoid alternative prey population increases.

TABLE D – POPULATION AND HABITAT MONITORING

Management Tool	Contribution to Population and Distribution Objectives	Action Objective over Term of Agreement	Accountable Agency	Ranges	Deliverables				
					2021	2022	2023	2024	2025
D.1 Monitoring	Monitor annual population growth and distribution	D.1.1 Assess woodland caribou population status	Alberta	All ranges in whole or in part on provincial land	Implement annual program and prepare a report.	Implement annual program and prepare a report.	Implement annual program and prepare a report.	Implement annual program and prepare a report.	Implement annual program and prepare a report.

Management Tool	Contribution to Population and Distribution Objectives	Action Objective over Term of Agreement	Accountable Agency	Ranges	Deliverables				
					2021	2022	2023	2024	2025
	Estimate range-specific population size	D.1.2 Estimate total population size	Alberta	One or two ranges per year to establish baseline conditions	Field work, analyses, and reporting.	Field work, analyses, and reporting.	Field work, analyses, and reporting.	Field work, analyses, and reporting.	Field work, analyses, and reporting.
	Habitat disturbance by human and natural sources	D.1.3 Develop an annual monitoring and reporting framework for habitat disturbance and recovery, including areas where habitat restoration has been initiated	Alberta	All ranges in whole or in part on provincial land	Annual assessment and reporting on trends in habitat disturbance and recovery, biophysical habitat attributes by type, and spatial arrangement of habitat.	Annual assessment and reporting on trends in habitat disturbance and recovery, biophysical habitat attributes by type, and spatial arrangement of habitat.	Annual assessment and reporting on trends in habitat disturbance and recovery, biophysical habitat attributes by type, and spatial arrangement of habitat.	Annual assessment and reporting on trends in habitat disturbance and recovery, biophysical habitat attributes by type, and spatial arrangement of habitat.	Annual assessment of trends in habitat disturbance and recovery, biophysical habitat attributes by type, and spatial arrangement of habitat. Prepare 5 year report.
	Critical habitat and woodland caribou population recovery	D.1.4 Deliver woodland caribou conservation, management, and recovery measures	Alberta	All ranges in whole or in part on provincial land	Evaluate and coordinate areas where additional knowledge will help inform conservation, management, and recovery measures (e.g., silvicultural prescriptions).	Evaluate and coordinate areas where additional knowledge will help inform conservation, management, and recovery measures (e.g., silvicultural prescriptions).	Evaluate and coordinate areas where additional knowledge will help inform conservation, management, and recovery measures (e.g., silvicultural prescriptions).	Evaluate and coordinate areas where additional knowledge will help inform conservation, management, and recovery measures (e.g., silvicultural prescriptions).	Evaluate and coordinate areas where additional knowledge will help inform conservation, management, and recovery measures (e.g., silvicultural prescriptions).
	Delineation of critical habitat	D.1.5 Delineate range categories within each local population unit for southern mountain caribou ranges	Environment and Climate Change Canada	A La Peche Narraway Redrock-Prairie Creek	Environment and Climate Change Canada to provide necessary information to support critical habitat delineation within each range.				